

EXTERIOR

CONTENTS

120002128

FRONT BUMPER	3	REAR WIPER AND WASHER*	9
REAR BUMPER	4	SERVICE SPECIFICATION	9
GRILLES, GARNISHES AND MOULDINGS	5	REAR WIPER AND WASHER	9
SPECIAL TOOL	5	Inspection	11
GRILLES, GARNISHES AND MOULDINGS	5	Column Switch Inspection	11
WINDSHIELD WIPER AND WASHER*	6	Intermittent Wiper Relay Inspection	11
SERVICE SPECIFICATION	6	Washer Motor Inspection	12
WINDSHIELD WIPER AND WASHER	6	HEADLAMP WASHER*	13
Inspection	8	Inspection	14
Column Switch Inspection	8		

CONTINUED ON NEXT PAGE

WARNINGS REGARDING SERVICING OF SUPPLEMENTAL RESTRAINT SYSTEM (SRS) EQUIPPED VEHICLES

WARNING!

- (1) Improper service or maintenance of any component of the SRS, or any SRS-related component, can lead to personal injury or death to service personnel (from inadvertent firing of the air bag) or to the driver and passenger (from rendering the SRS inoperative).
- (2) Service or maintenance of any SRS component or SRS-related component must be performed only at an authorized MITSUBISHI dealer.
- (3) MITSUBISHI dealer personnel must thoroughly review this manual, and especially its GROUP 52B – Supplemental Restraint System (SRS) before beginning any service or maintenance of any component of the SRS or any SRS-related component.

NOTE

The SRS includes the following components: impact sensors, SRS diagnosis unit, SRS warning lamp, air bag module, clock spring and interconnecting wiring. Other SRS-related components (that may have to be removed/installed in connection with SRS service or maintenance) are indicated in the table of contents by an asterisk (*).

DOOR MIRROR	15	ADHESIVE	17
SPECIAL TOOL	15	REAR UNDER GUARD	17
DOOR MIRROR	15	STEP <4WD>	18
Inspection	16	ADHESIVE	18
REAR UNDER GUARD <4WD>	17	STEP	18

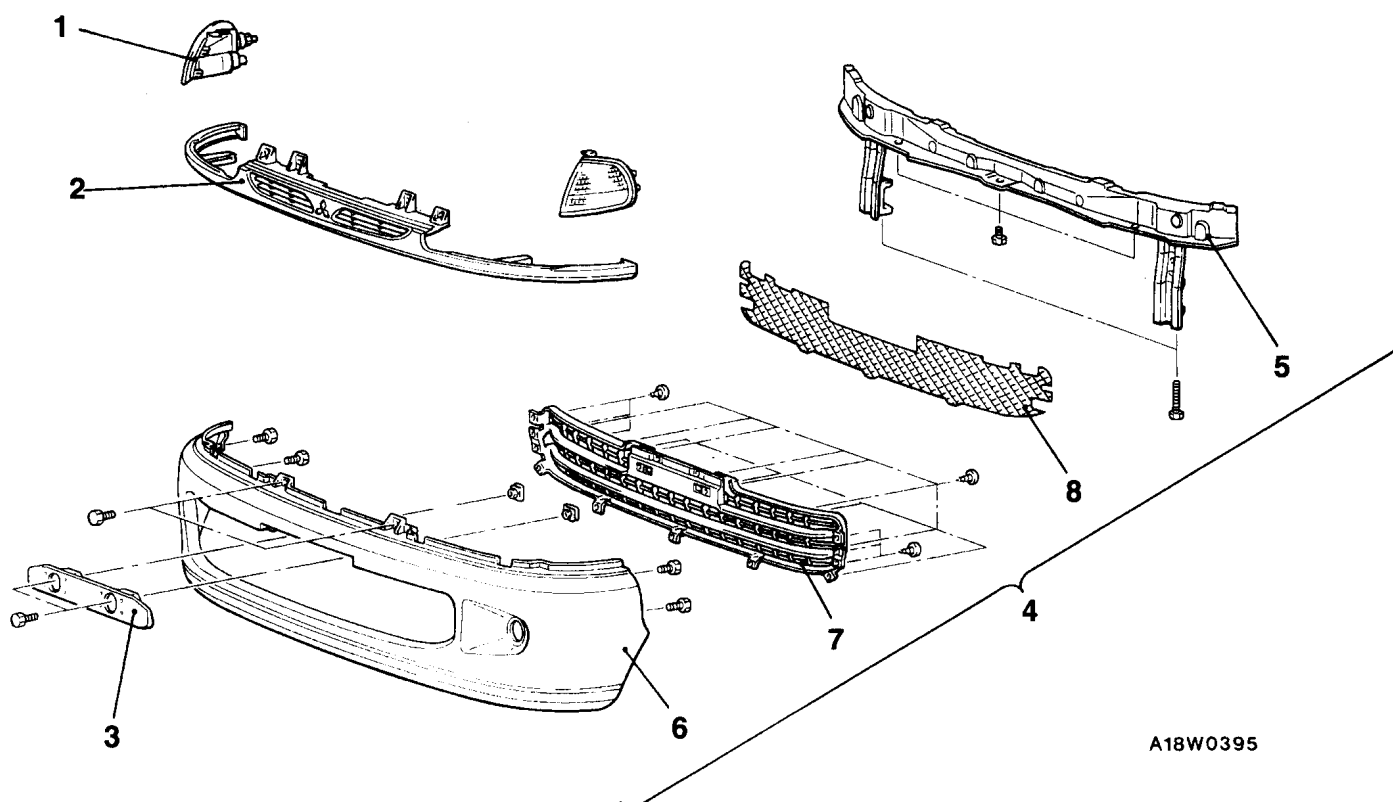
FRONT BUMPER

120002129

REMOVAL AND INSTALLATION

Pre-removal and Post-installation Operations

- (1) Splash Shield Removal and Installation
(Refer to GROUP 42 – Fender.)
- (2) Under Cover Panel Removal and Installation
(Refer to GROUP 42 – Under Cover.)



A18W0395

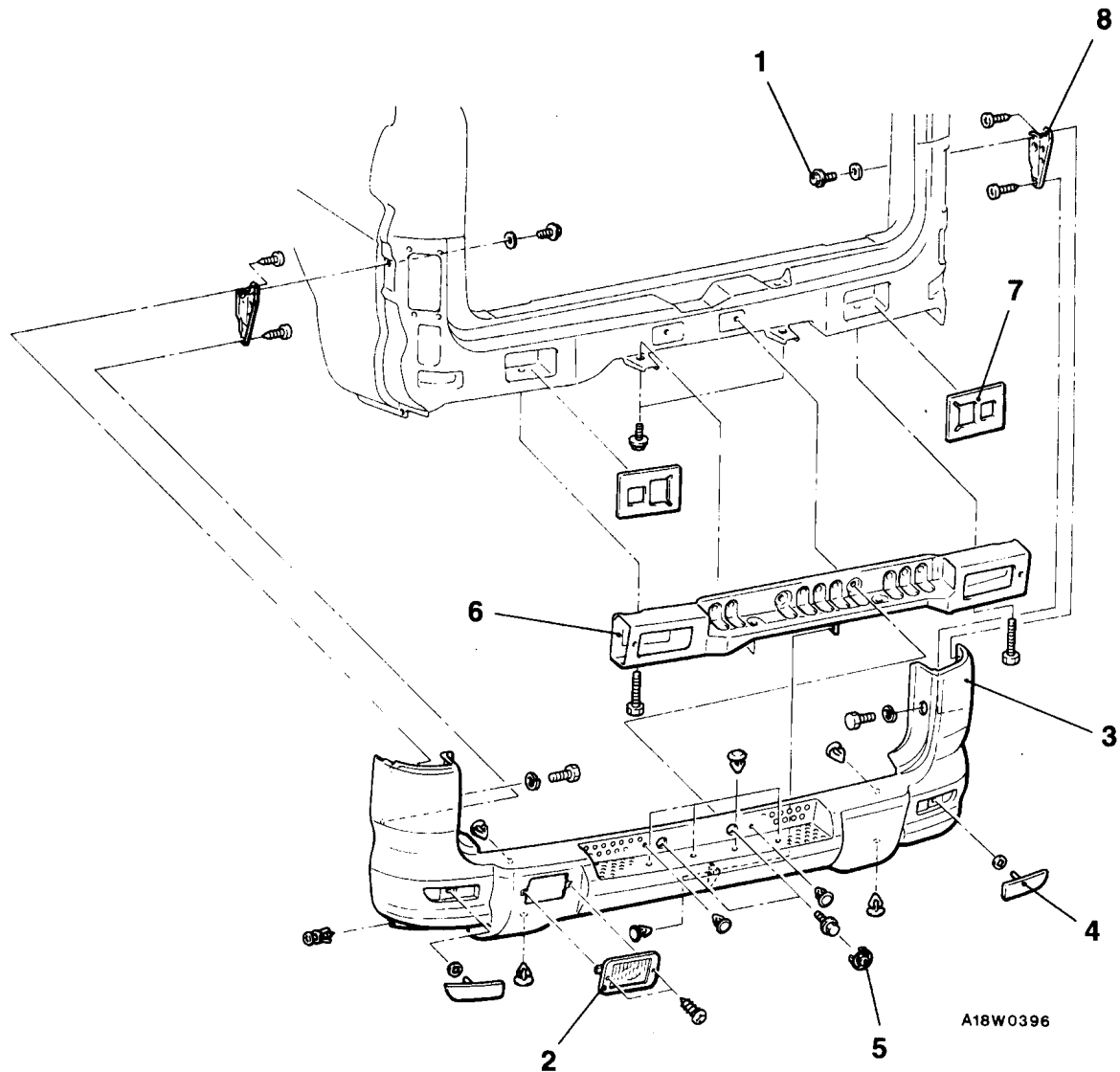
Removal steps

1. Front turn signal lamp (Refer to GROUP 54 – Front Turn Signal Lamp.)
2. Radiator grille (Refer to P. 51-5.)
3. License plate bracket assembly
4. Bumper assembly
5. Front bumper reinforcement
6. Bumper face
7. Under grille
8. Net

REAR BUMPER

120002130

REMOVAL AND INSTALLATION



NOTE

The rear fog lamp is only installed at driver's side.

Removal steps


- Gate pillar trim lower (Refer to GROUP 52A – Trim.)
- Rear washer tank (Refer to P.51-10.)
- 1. Bolt
- 2. Rear fog lamp
- 3. Rear bumper face
- 4. Reflector
- 5. Cap

- 6. Rear bumper back beam assembly
- 7. Packing
- 8. Rear bumper side bracket

GRILLES, GARNISHES AND MOULDINGS

120000392

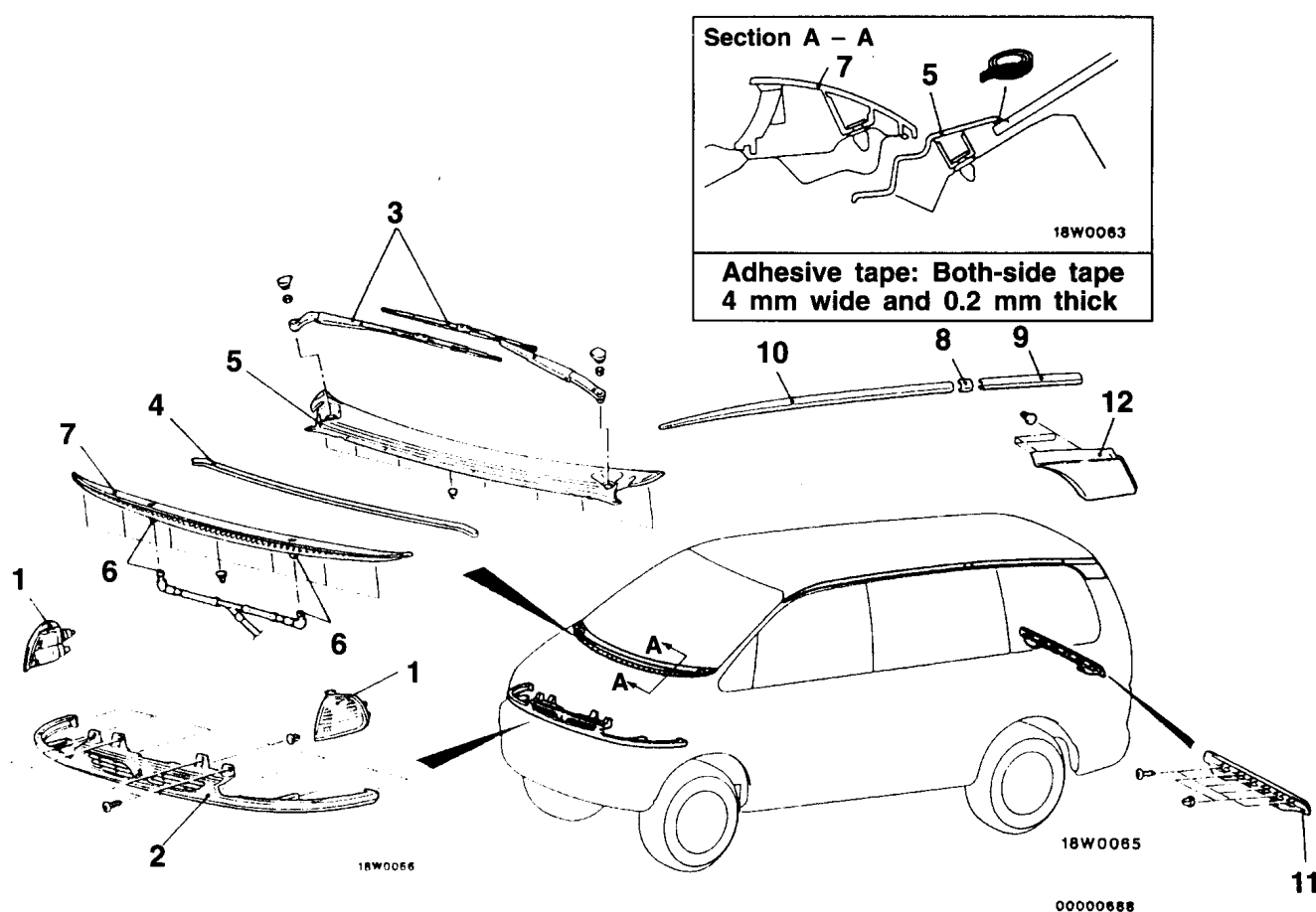
SPECIAL TOOL

Tool	Number	Name	Use
	MB990449	Window moulding remover	Removal of roof drip moulding, etc.

GRILLES, GARNISHES AND MOULDINGS

120000393

REMOVAL AND INSTALLATION

**Radiator grille removal steps**

1. Front turn signal lamp
(Refer to GROUP 54 – Front Turn Signal Lamp.)
2. Radiator grille

Front deck garnish removal steps

3. Wiper arm assembly
4. Hood weatherstrip
5. Front deck garnish

Hood end garnish removal steps

- Air intake duct assembly
(Refer to GROUP 42 – Hood.)
- 6. Washer hose connection
- 7. Hood end garnish

Drip moulding removal steps

8. Joint
9. Rear drip moulding
10. Front drip moulding

Tailgate garnish removal steps

- Tailgate trim
(Refer to GROUP 52A – Trim.)
- 11. Tailgate garnish

D pillar garnish removal

12. D pillar garnish

WINDSHIELD WIPER AND WASHER

120002131

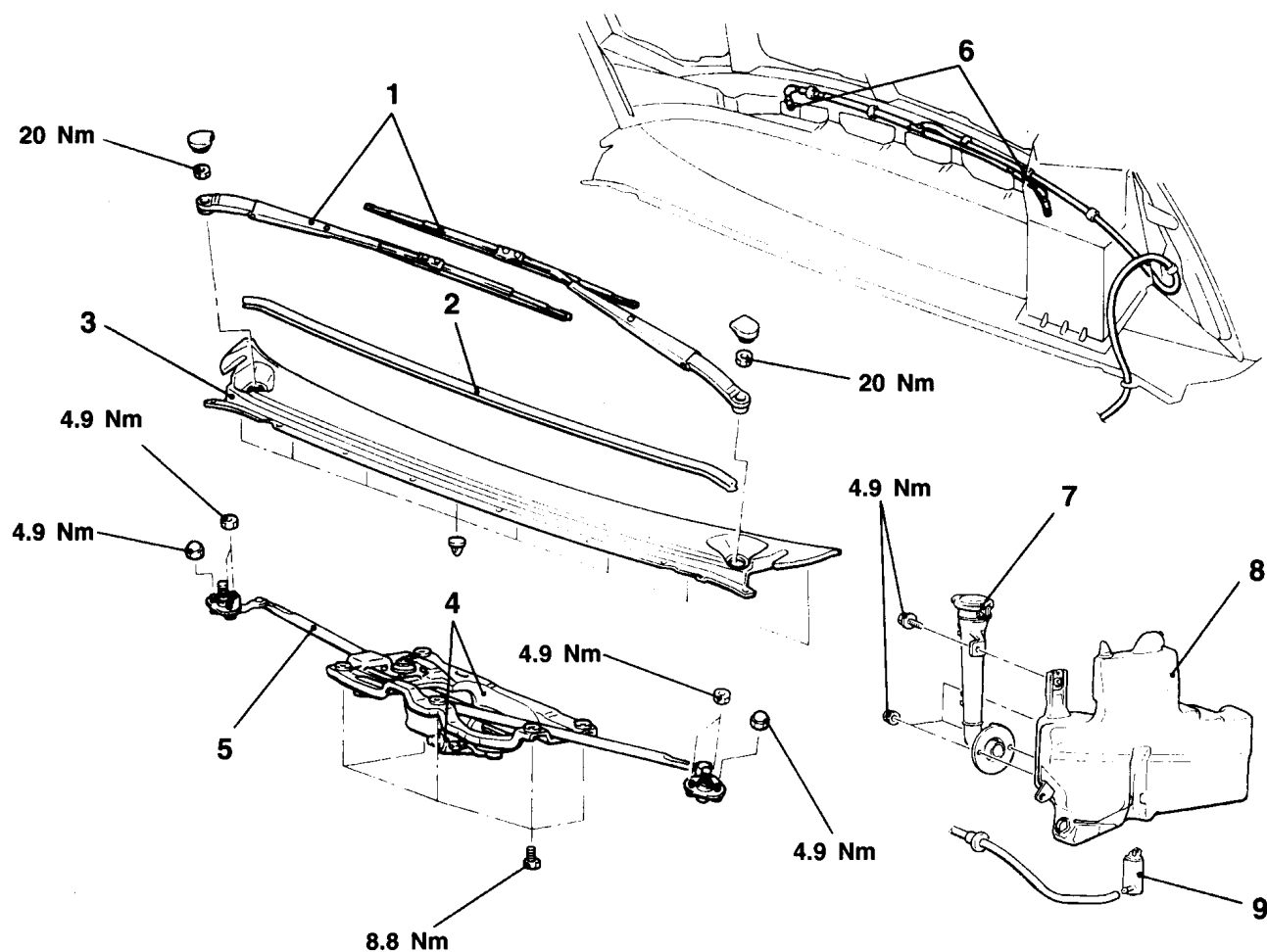
SERVICE SPECIFICATION

Items		Standard value
Windshield wiper blade installation position mm	R.H. (Distance from the front deck garnish end)	30±5
	L.H. (Distance from the wiper blade R.H.)	60±5

WINDSHIELD WIPER AND WASHER

120002132

REMOVAL AND INSTALLATION



A18W0397

Wiper motor and linkage removal steps



1. Wiper arm and blade assembly
2. Hood weatherstrip
3. Front deck garnish
4. Wiper motor and bracket assembly
5. Link assembly

Washer nozzle removal steps

- Air intake duct assembly
(Refer to GROUP 42 – Hood.)
- 6. Washer nozzle

Washer tank removal steps

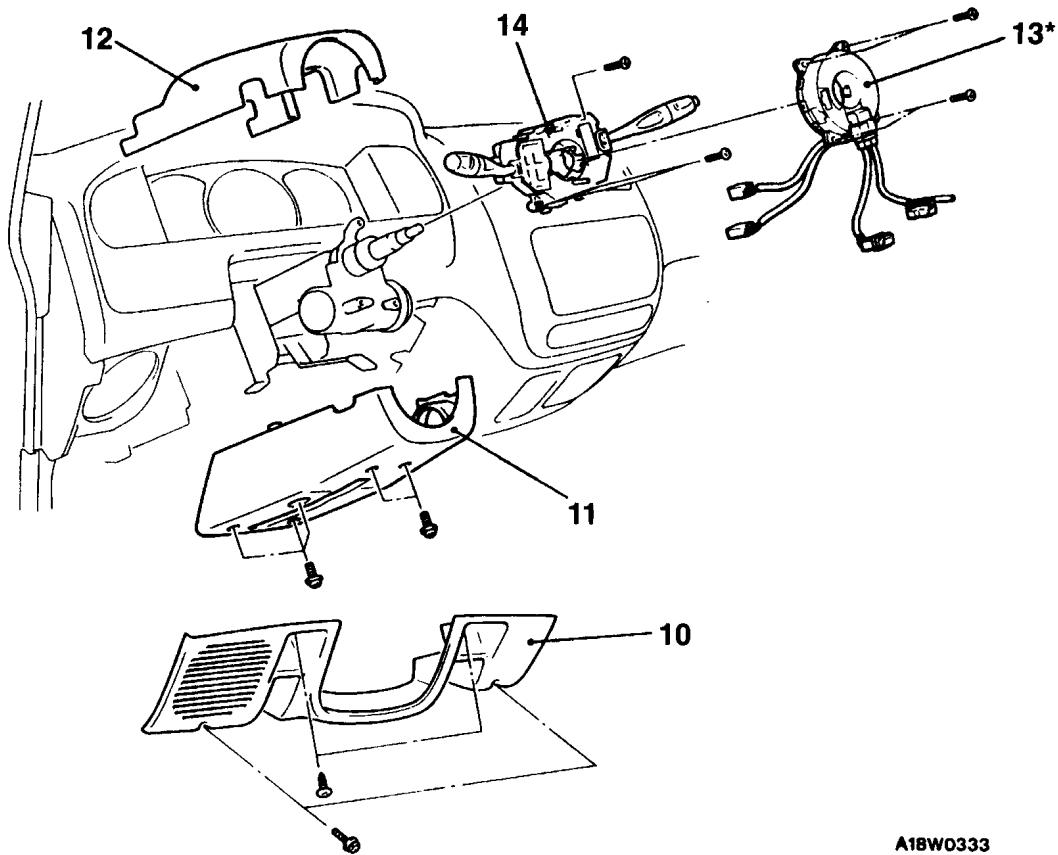
- Reserve tank
(Refer to GROUP 14 – Radiator.)
- 7. Inlet assembly
- Splash shield
(Refer to GROUP 42 – Fender.)
- 8. Windshield washer tank
- 9. Washer motor and pump assembly

CAUTION: SRS

Before removal of air bag module and clock spring, refer to GROUP 52B – Service Precautions and Air Bag Module and Clock Spring.

Post-installation Operation

- Checking Steering Wheel Position with Wheels Straight Ahead



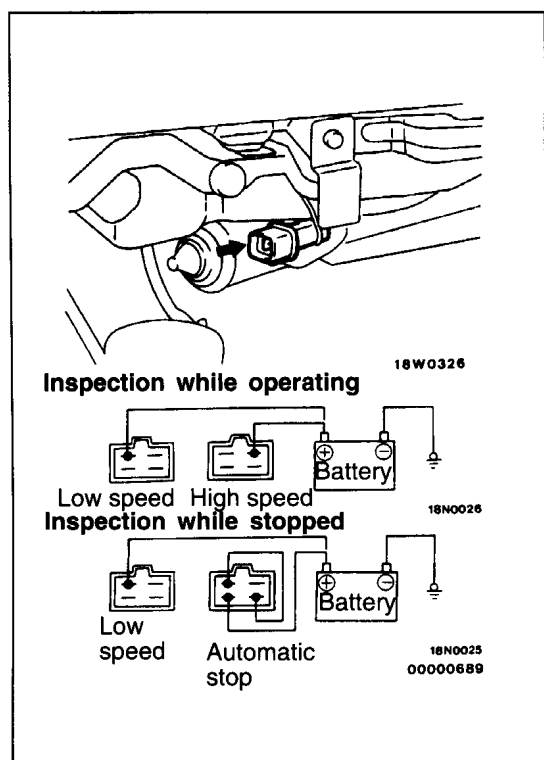
A18W0333

Column switch removal steps

- Horn pad (Refer to GROUP 37A – Steering Wheel and Shaft.)
 - Air bag module (Refer to GROUP 52B – Air Bag Module and Clock Spring.)
 - Steering wheel (Refer to GROUP 37A – Steering Wheel and Shaft.)
10. Under cover (Refer to GROUP 52A – Instrument panel.)
 11. Column cover, lower
 12. Column cover, upper
 13. Clock spring* <Vehicles with SRS> (Refer to GROUP 52B – Air Bag Module and Clock Spring.)
 14. Column switch assembly (With built-in wiper and washer switch, and wiper relay)

NOTE

Parts marked with * should not be removed from the column switch except when removal is absolutely necessary.



INSPECTION

WIPER MOTOR INSPECTION

Check the wiper motor after disconnecting the wiring harness connector, and with the wiper motor remaining installed to the body.

Wiper Motor at Low Speed and High Speed Operation

Connect a battery to the wiper motor as shown in the illustration and inspect motor operation at low speed and high speed.

Wiper Motor at Stop Position Operation

- (1) Run the wiper motor at low speed, disconnect the battery, and stop the motor.
- (2) Reconnect the battery as shown in the illustration, and confirm that after the motor starts turning at low speed, it stops at the automatic stop position.

COLUMN SWITCH INSPECTION

Wiper and Washer Switch Continuity Inspection

<L.H. drive vehicles>

Switch position		Terminal No.				
		6	7	8	9	10
Wiper switch	OFF		○	○		
	1 (LO)			○		○
	2 (HI)				○	○
Washer switch	ON	○				○

<R.H. drive vehicles>

Switch position		Terminal No.				
		8	9	10	11	12
Wiper switch	OFF			○	○	
	1 (LO)	○		○		
	2 (HI)	○	○			
Washer switch	ON	○				○

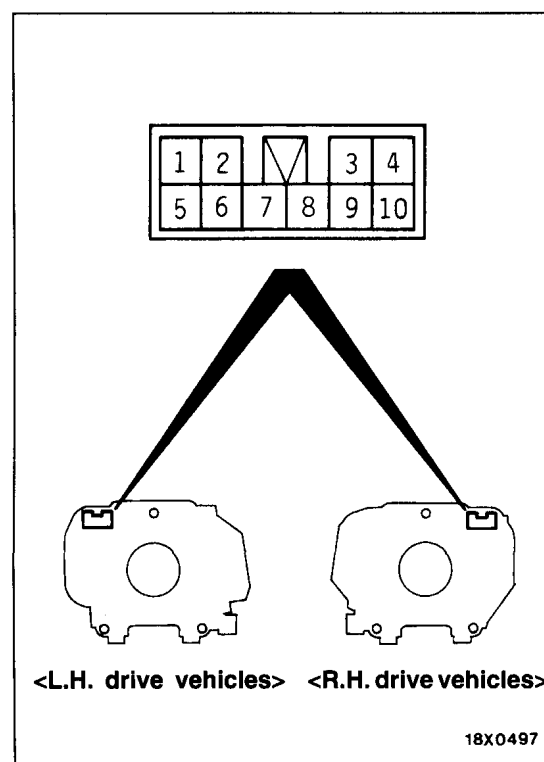
Intermittent Wiper Relay; Intermittent Operation Inspection (integrated into the column switch assembly)

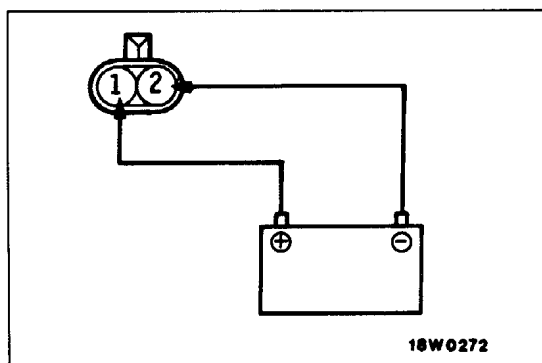
- (1) Connect the column switch connector.
- (2) Turn the ignition switch to ACC.
- (3) Inspect the intermittent operation time when the wiper switch is turned to INT.

Vehicles with variable intermittent control

FAST: Approx. 2 seconds

SLOW: Approx. 15 seconds



**WASHER MOTOR**

- (1) With the washer motor installed to the washer tank, fill the washer tank with water.
- (2) When the battery is connected as shown in the figure, check that the water squirts out strongly.

INSTALLATION SERVICE POINT**►◄ WIPER ARM AND BLADE ASSEMBLY INSTALLATION**

Install the wiper blade in the specified position (standard value).

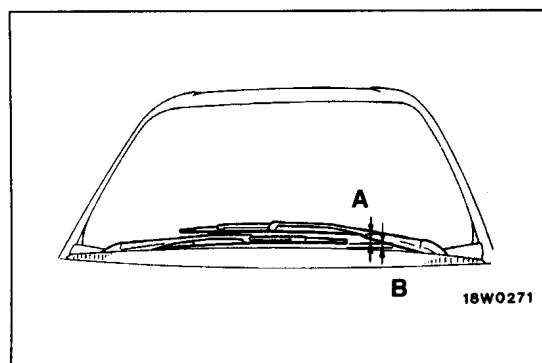
Standard value:

Distance from the wiper blade (R.H.)

(A): 60 ± 5 mm

Distance from the front deck garnish end

(B): 30 ± 5 mm

**REAR WIPER AND WASHER**

120000396

SERVICE SPECIFICATION

Items	Standard value
Rear wiper blade's stop position (Distance from the rear window glass ceramic end line) mm	70 ± 5

REAR WIPER AND WASHER

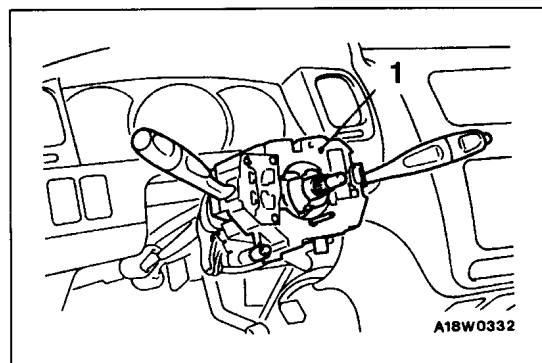
120002133

REMOVAL AND INSTALLATION**CAUTION: SRS**

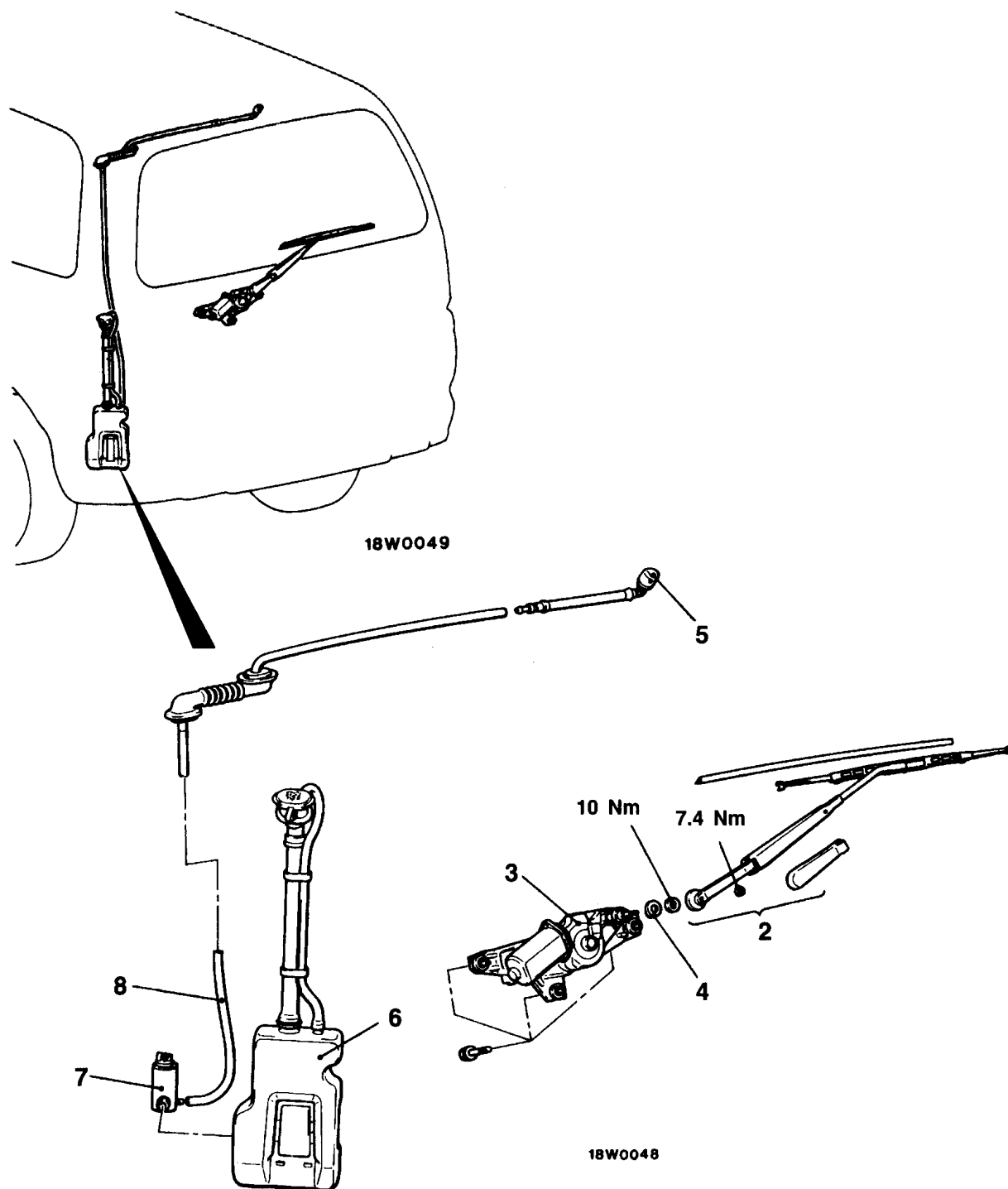
Before removal of air bag module and clock spring, refer to GROUP 52B – Service Precautions and Air Bag Module and Clock Spring.

Post-installation Operation**<Column switch assembly>**

- Checking Steering Wheel Position with Wheels Straight Ahead

**Column switch removal**

1. Column switch assembly (Wiper and washer switch)
(Refer to P. 51-7.)



00000690

Wiper motor removal steps

- Tailgate trim
(Refer to GROUP 52A – Trim.)
- A◄
2. Wiper arm and blade assembly
 3. Motor and bracket assembly
 4. Packing and washer

Washer nozzle removal

5. Washer nozzle

Washer tank removal steps

- Box lid (Refer to GROUP 52A – Trim.)
6. Washer tank assembly
 7. Washer motor
 8. Washer hose assembly

INSPECTION**WIPER MOTOR INSPECTION**

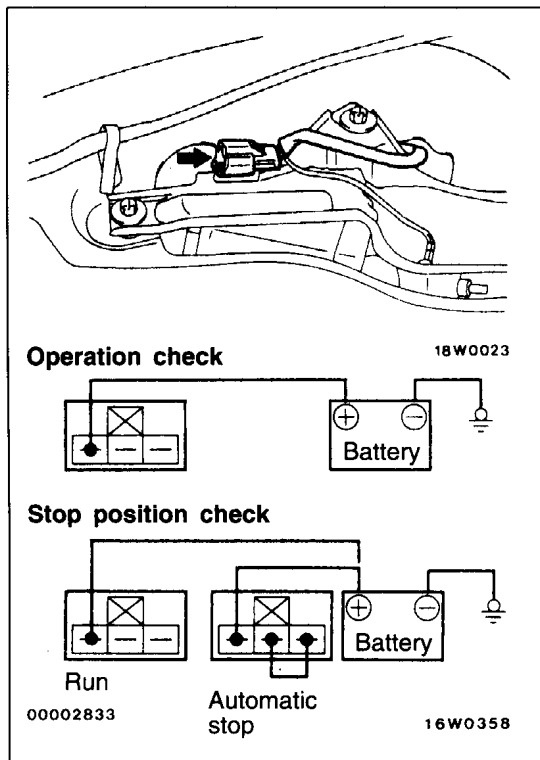
Check the wiper motor after first disconnecting the wiring harness connector, and with the wiper motor remaining installed to the body.

Wiper Motor Operation

Connect a battery to the wiper motor as shown in the illustration and inspect the motor operation.

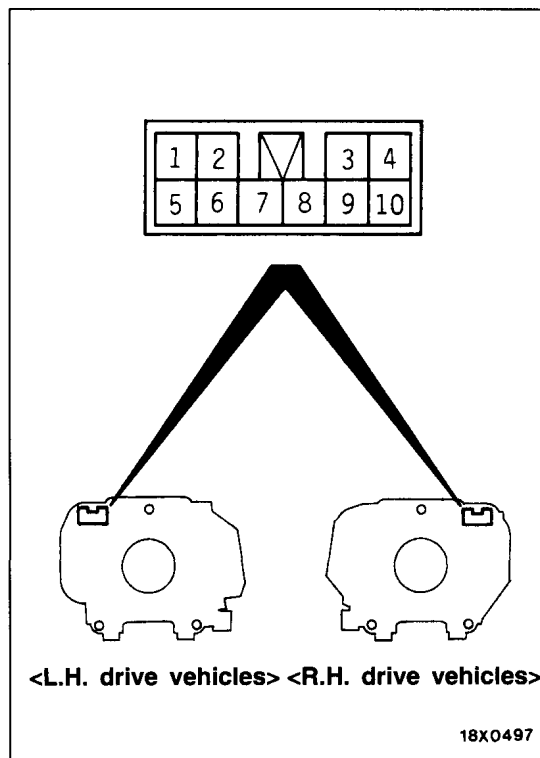
Wiper Motor at Stop Position Operation

- (1) Run the wiper motor, disconnect the battery, and stop the motor.
- (2) Reconnect the battery as shown in the illustration, and confirm that after the motor starts turning, it stops at the automatic stop position.

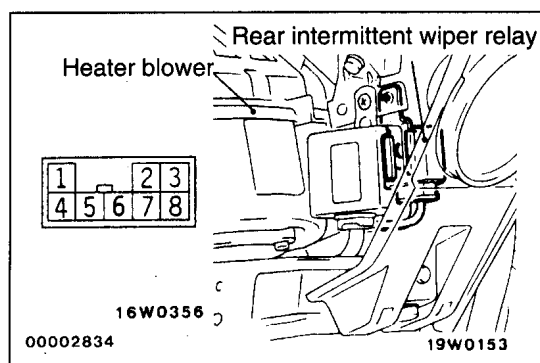
**COLUMN SWITCH INSPECTION****Wiper and Washer Switch Continuity Inspection**

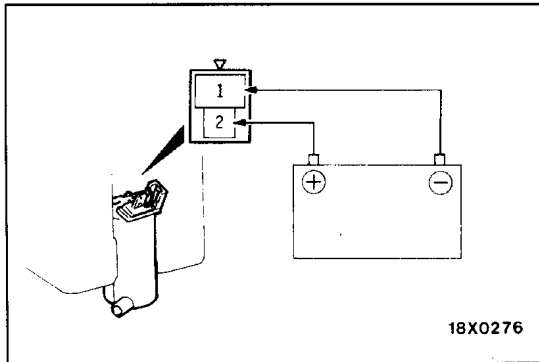
Switch position		Terminal No.			
		2	3	4	10, 8*
Wiper switch	INT		○		○
	ON			○	○
Washer switch	ON	○			○

*: R.H. drive vehicles

**INTERMITTENT WIPER RELAY INSPECTION**

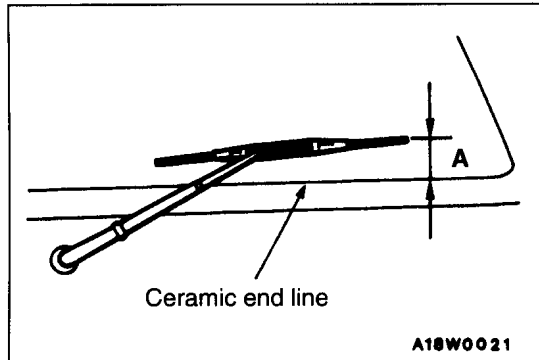
- (1) Check to be sure that there is continuity between terminals (1) – (2).
- (2) Connect terminal (4), (5) to the battery (+) terminal.
- (3) Check that there is battery voltage at terminal (2) for intermittent periods of 8 seconds when terminal (7) is connected to the battery (–) terminal.





WASHER MOTOR INSPECTION

- (1) With the washer motor installed to the washer tank, fill the washer tank with water.
- (2) When the battery is connected as shown in the figure, check that the water squirts out strongly.



INSTALLATION SERVICE POINT

►A◄ WIPER ARM ASSEMBLY INSTALLATION

Install the wiper arm to the pivot shaft so that the wiper blade's stop position is the position (standard value) shown in the illustration.

Standard value (A): 70 ± 5 mm

HEADLAMP WASHER

REMOVAL AND INSTALLATION

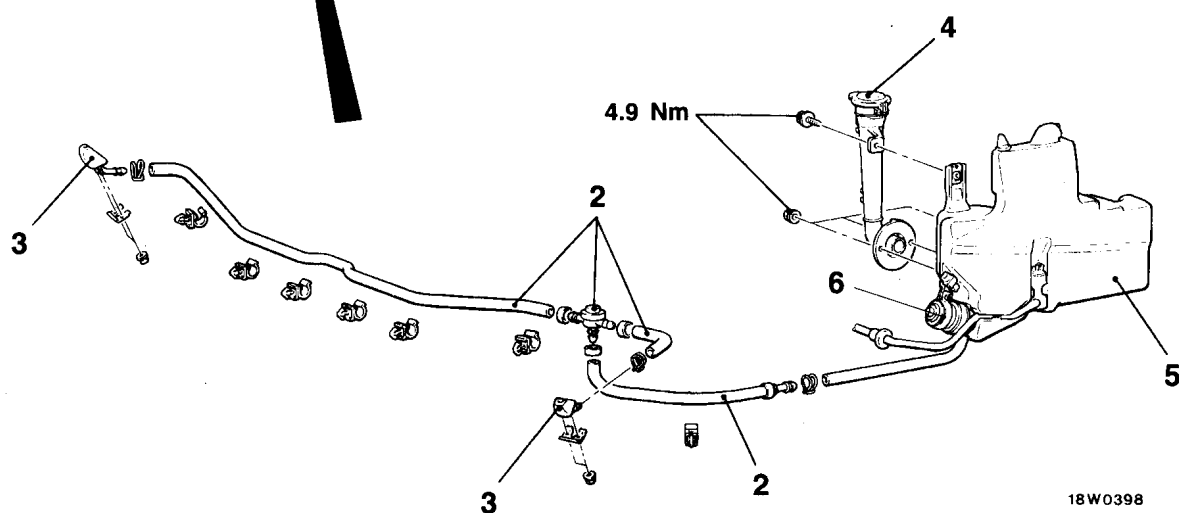
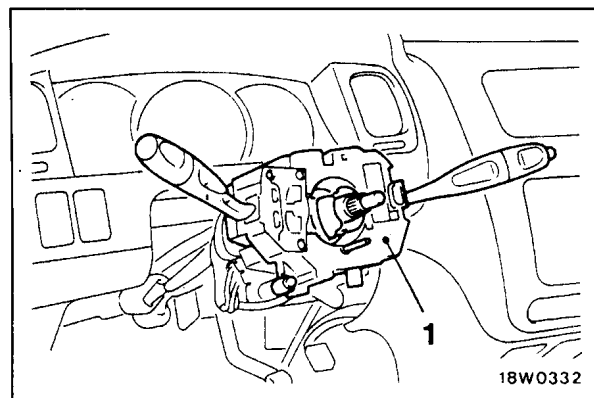
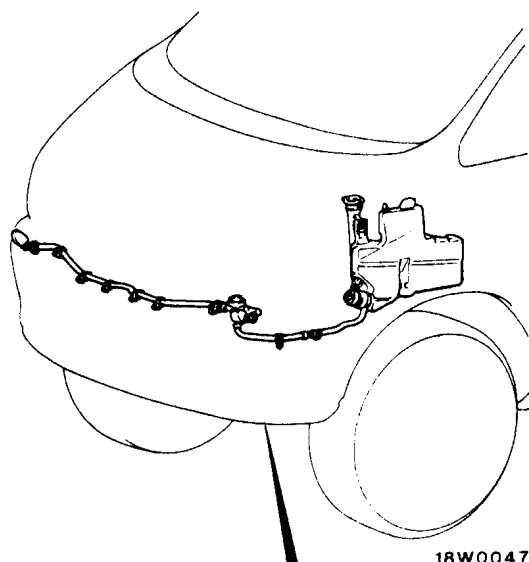
CAUTION: SRS

Before removal of air bag module and clock spring, refer to GROUP 52B – Service Precautions and Air Bag Module and Clock Spring.

Post-Installation Operation

<Column switch assembly>

- Checking Steering Wheel Position with Wheels Straight Ahead



00002667

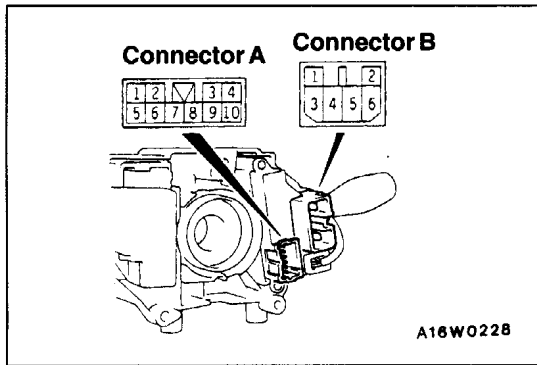
1. Column switch assembly (Headlamp washer switch) (Refer to P.51-14.)

Nozzle assembly removal steps

- Front bumper (Refer to P.51-3.)
2. Washer hose and check valve assembly
 3. Nozzle assembly

Washer tank removal steps

- Reserve tank (Refer to GROUP 14 – Radiator.)
4. Inlet assembly
 - Splash shield (Refer to GROUP 42 – Fender.)
 5. Washer tank
 6. Washer motor and washer fluid level switch



INSPECTION

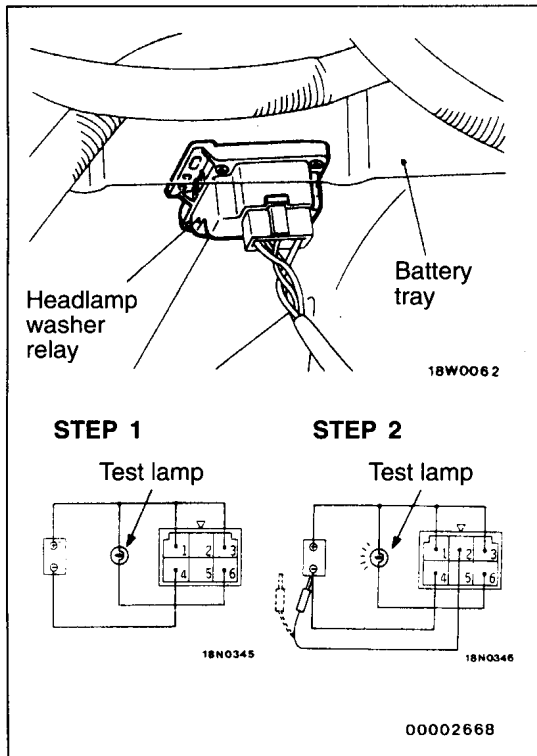
COLUMN SWITCH INSPECTION

Headlamp Washer Switch Continuity Inspection

Check the continuity between terminal 2 of connector A and terminal 1 of connector B with the headlamp washer switch in ON position.

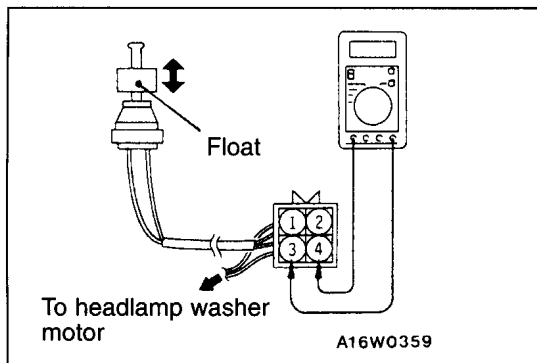
HEADLAMP WASHER RELAY INSPECTION

1. Connect battery and test lamp to the relay as illustrated.
2. The relay is normal if the lamp lights for approximately 0.5 second upon connection of terminal (2) to battery (-).



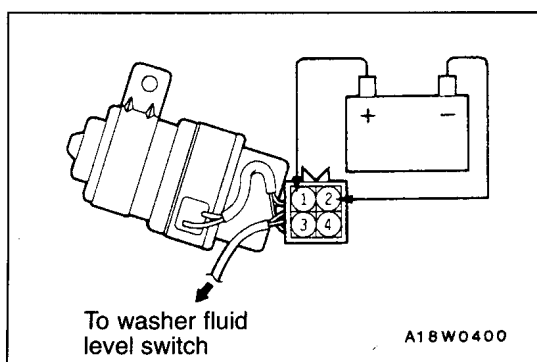
WASHER FLUID LEVEL SWITCH CONTINUITY INSPECTION

1. Remove the washer fluid level switch from the washer tank.
2. Connect a circuit tester to the connector of washer fluid level switch.
3. Move the float up and down.
4. Check to be sure that there is continuity between the terminals when the float is down.



HEADLAMP WASHER MOTOR INSPECTION


1. With the washer motor installed to the washer tank, fill the washer tank with water.
2. Connect battery (+) and (-) cables to terminals (2) and (1) respectively to see that the washer motor runs and water is injected.



DOOR MIRROR

120000398

SPECIAL TOOL

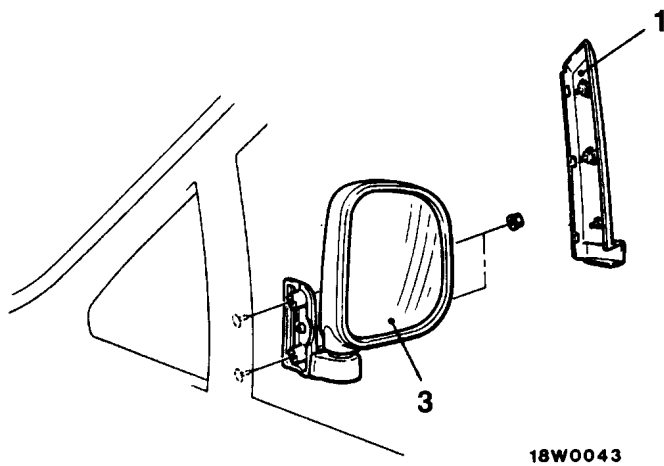
Tool	Number	Name	Use
	MB990784	Ornament remover	Removal of electric remote-controlled door mirror switch.

DOOR MIRROR

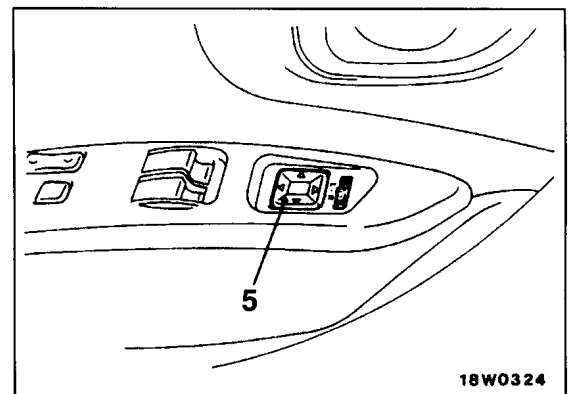
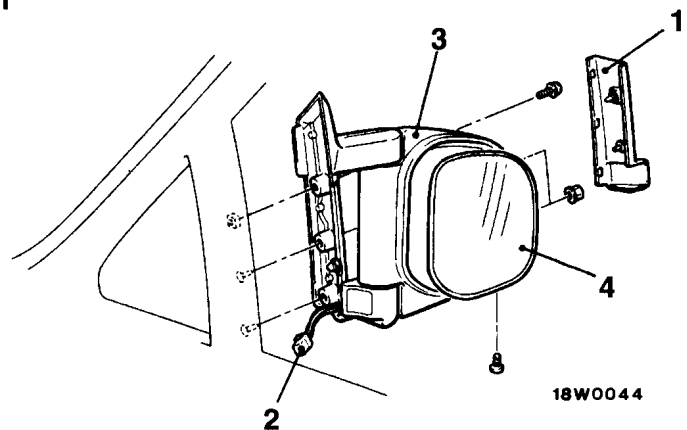
120002233

REMOVAL AND INSTALLATION

<Manual type>



<Electric remote-controlled type>



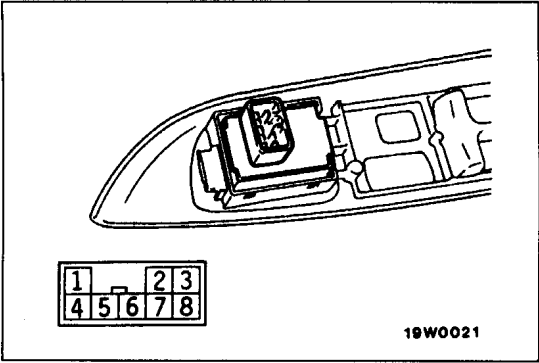
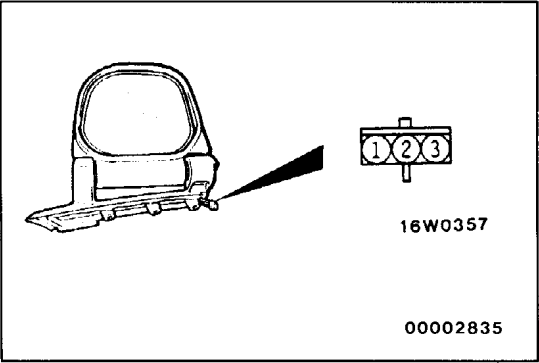
00000693

Door mirror removal steps

1. Mirror cover assembly
2. Harness connector <Vehicles with electric remote-controlled mirror>
3. Door mirror assembly
4. Mirror

Electric remote-controlled door mirror switch removal

5. Electric remote-controlled door mirror switch



INSPECTION

ELECTRIC REMOTE-CONTROLLED DOOR MIRROR INSPECTION

Battery connection terminal			Direction of operation
1	2	3	
⊖ ---	-----	--- ⊕	UP
⊕ ---	-----	--- ⊖	DOWN
⊕ ---	--- ⊖		LEFT
⊖ ---	--- ⊕		RIGHT

ELECTRIC REMOTE-CONTROLLED DOOR MIRROR SWITCH CONTINUITY INSPECTION

Direction of operation	Selector switch position	Terminal No.						
		1	2	3	4	5	6	7
UP	L.H. side			○ — ○				
	OFF	○ — ○						
	R.H. side			○ — ○				○
DOWN	L.H. side	○ — ○				○ — ○		
	OFF		○ — ○					
	R.H. side	○ — ○						○
LEFT	L.H. side	○ — ○			○ — ○			
	OFF		○ — ○					
	R.H. side	○ — ○					○ — ○	
RIGHT	L.H. side			○ — ○				
	OFF	○ — ○						
	R.H. side			○ — ○			○ — ○	

REAR UNDER GUARD <4WD>

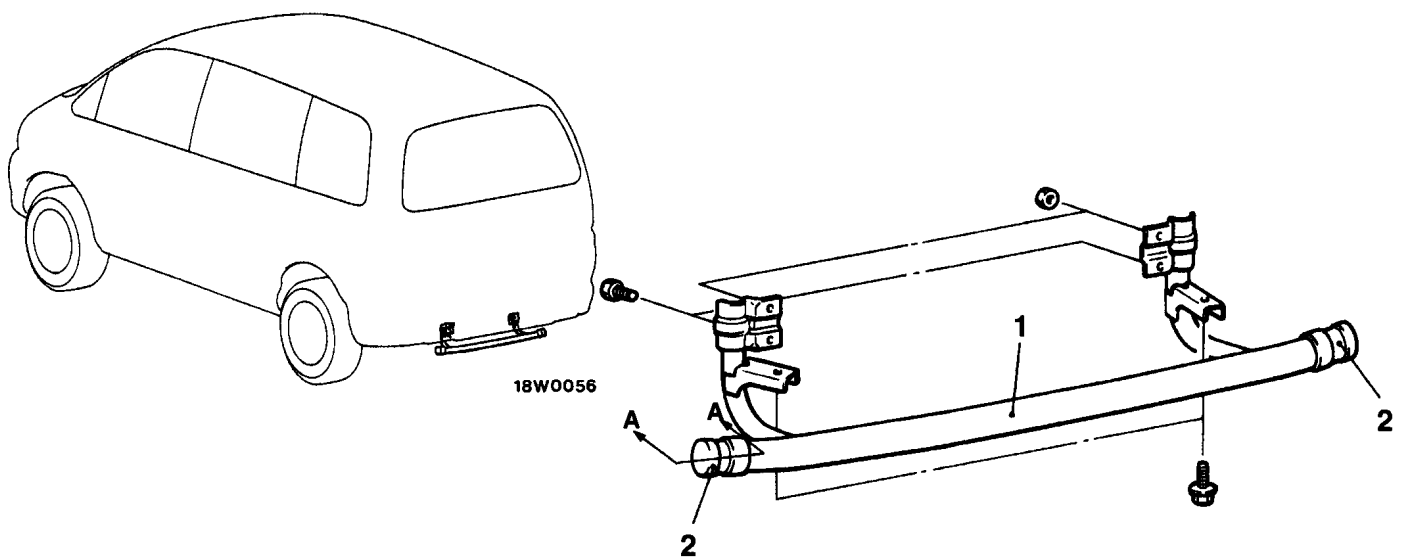
120000401

ADHESIVE

Item	Specified adhesive
Rear under guard and caps	3M Part No. EC-1368 or 3M ATD Part No. 8080 or equivalent

REAR UNDER GUARD

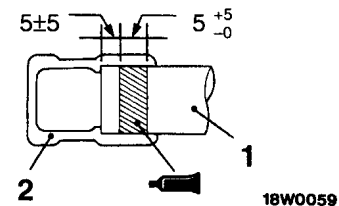
120000402

REMOVAL AND INSTALLATION

18W0058

Section A – A

mm



Adhesive: 3M Part No. EC-1368 or 3M ATD Part No. 8080 or equivalent

00000695

Removal steps

1. Rear under guard
2. Caps

STEP <4WD>

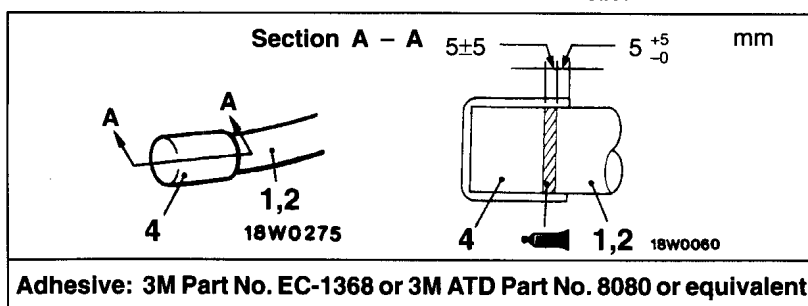
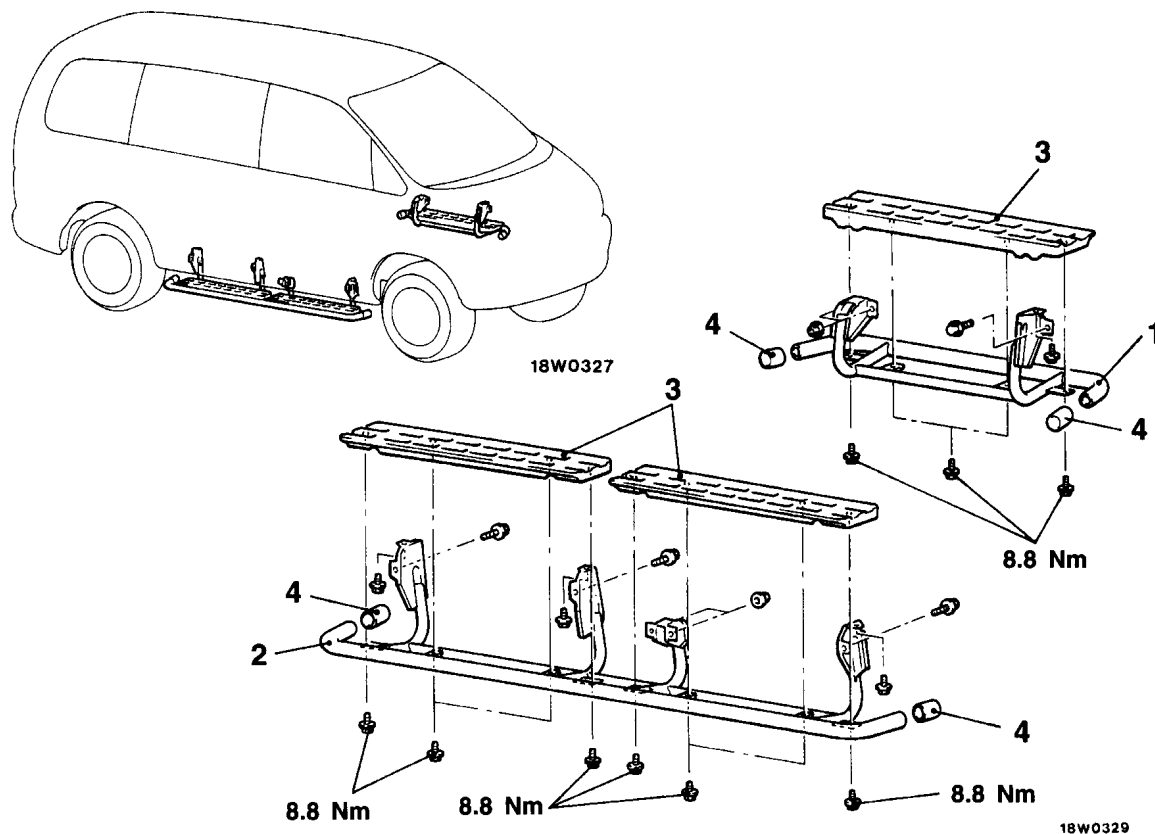
120000403

ADHESIVE

Item	Specified adhesive
Step assembly (A), (B) and caps	3M Part No. EC-1368 or 3M ATD Part No. 8080 or equivalent

STEP

120000404

REMOVAL AND INSTALLATION

00000696

Removal steps

1. Step assembly (A)
2. Step assembly (B)
3. Side step
4. Caps